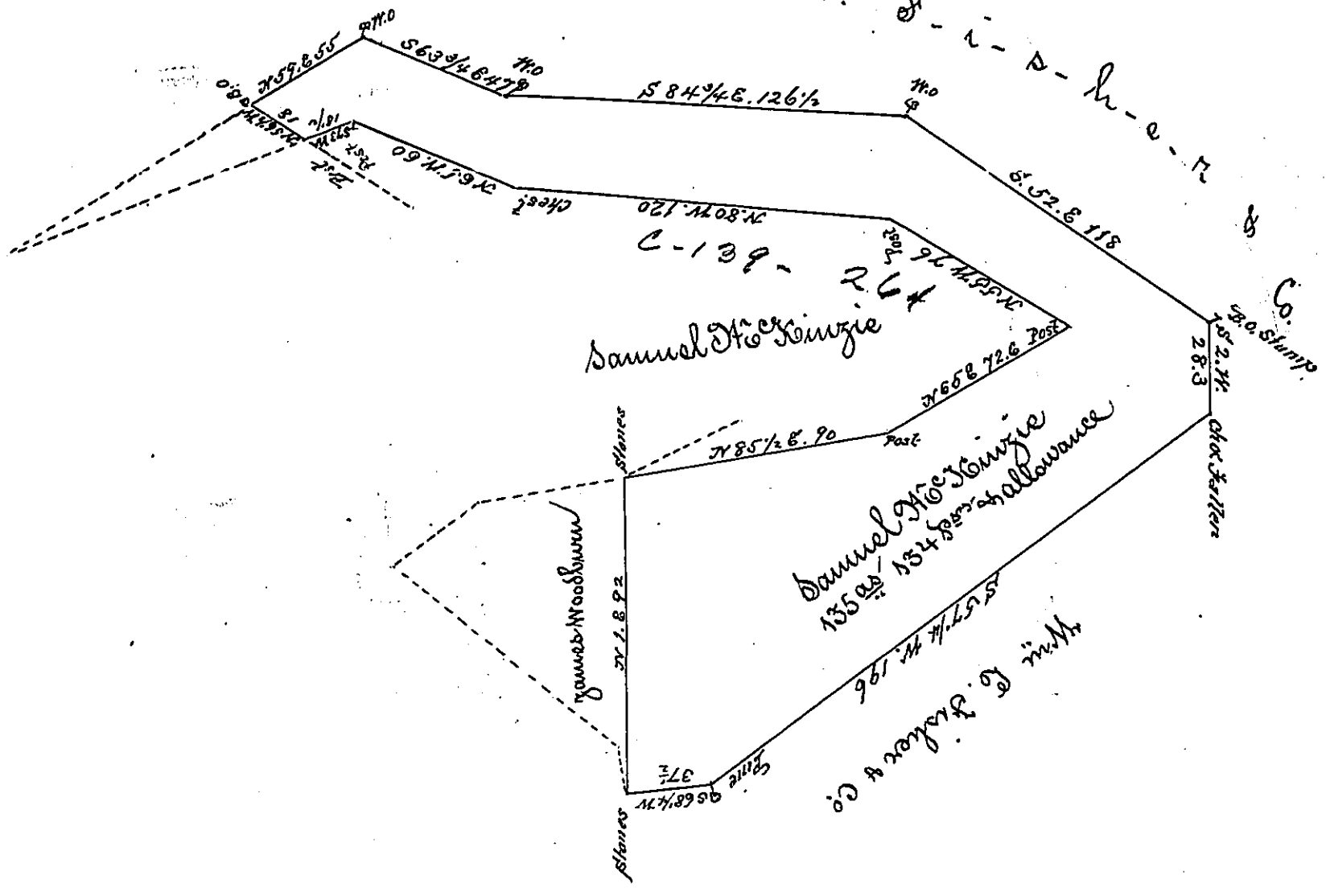


W - u - l - l - u - a - m

D - i - v - i - s - i - o - n



Draft of a tract of land situate in Wheatfield Township, Devo County containing one hundred and thirty five acres 1/4 acres + allowance Part of 158^{ac} 56^{sq} + allowance Resurveyed in pursuance of a warrant granted Robert Woodburn and John Woodburn dated the 4th day of December 1786 and an order of Resurvey on the same dated April 15th 1834.

The above part surveyed for Samuel McKeuzie the owner thereof 10th 1842
 Jacob Dallade Esq. }
 Surveyor General Pa }

Wm. Wilson D.S.

IN TESTIMONY that the above is a copy of the original remaining on file in the Department of Internal Affairs of Pennsylvania, made conformably to an Act of Assembly approved the 16th day of February, 1833, I have hereunto set my Hand and caused the Seal of said Department to be affixed at Harrisburg, this second day of August 1898.

James W. Patton
 Secretary of Internal Affairs.